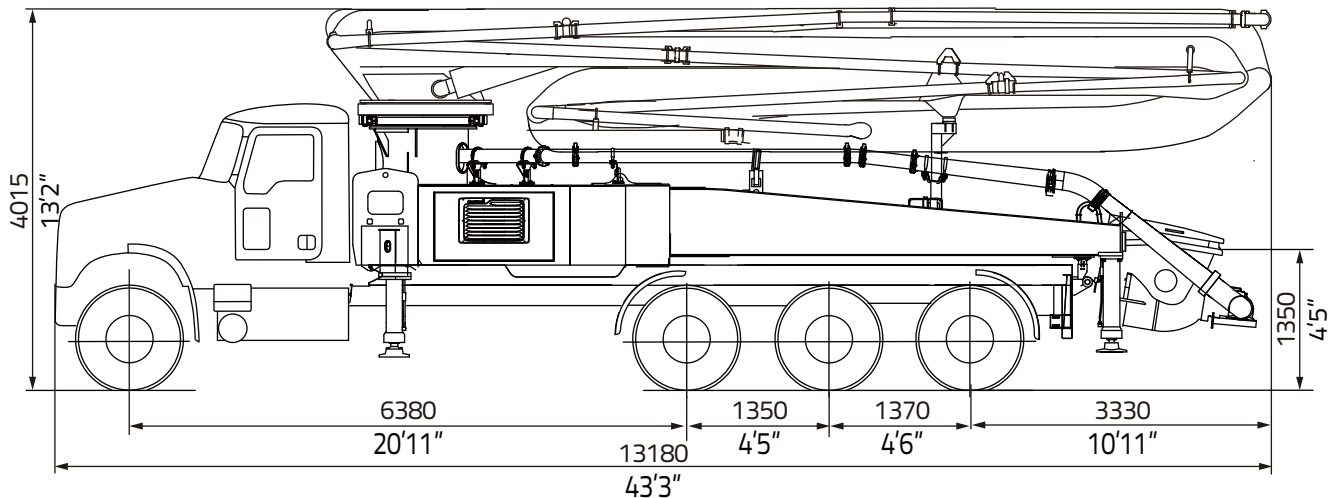


# TRUCK MOUNTED CONCRETE PUMP 47X-5RZ



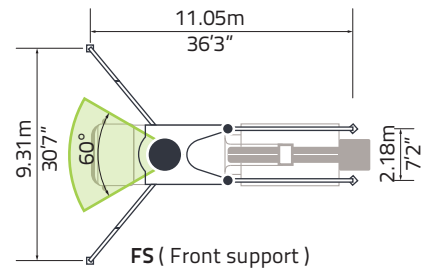
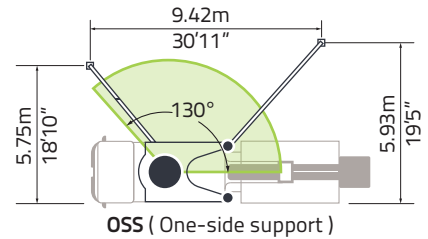
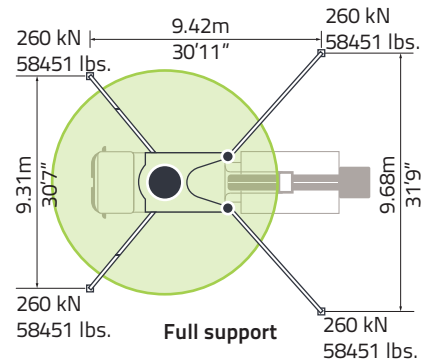
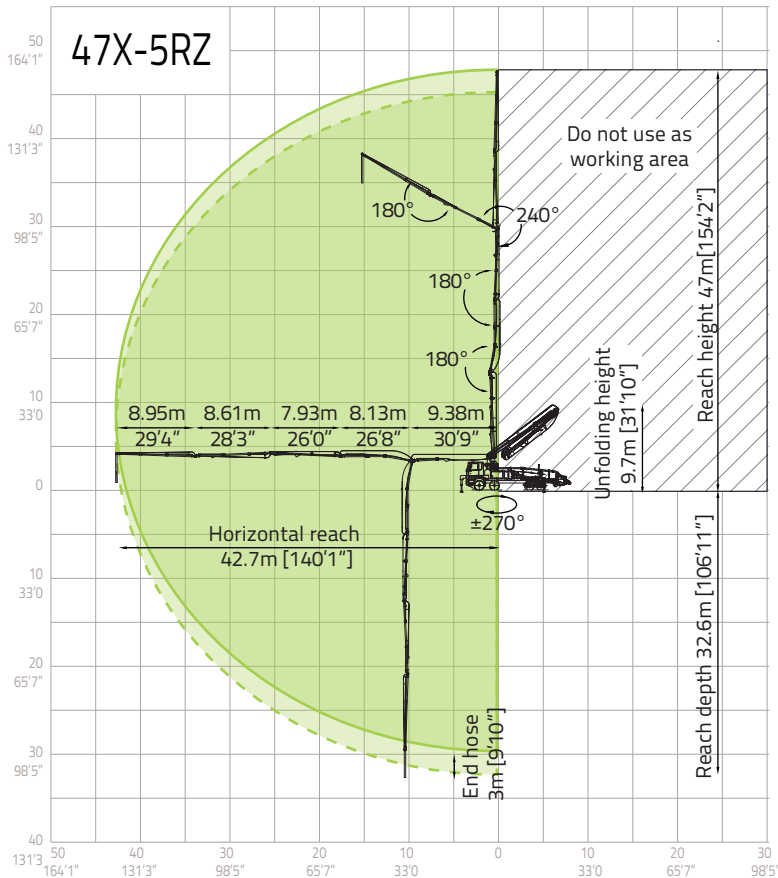
Note: Standard version. Dimensions and weights depend on truck, pump model and equipment.  
Dimensions in mm. Example based on MACK.  
For illustration only. Actual products may vary.

## Technical Specifications

<b>BOOM</b>	<b>Metric</b>	<b>U.S.</b>
Reach height	47 m	154'2"
Horizontal reach ( gross/net )	42.7 m / 38.8 m	140'1" / 127'4"
Reach depth	32.6 m	106'11"
Unfolding height	9.7 m	31'10"
Sections	5	5
Folding system	RZ	RZ
End hose length	3 m	9'10"
Delivery line	DN 125	5"
<b>PUMP</b>		
Max. output	170 m <sup>3</sup> /h	222 cu. yds./h
Max. pressure	88 bar	1276 psi
Delivery cylinder	Φ 260 mm	Φ 10"
Stroke	2100 mm	6'11"

\*All data are maximum theoretical values.

# Reach information diagram, support



## Configurations ( Optional★ )

### Pumping System

- ECO (Eco. Pumping)
- CPC (Condition-adaptive Pumping Control)
- Pumping concrete status identification and prompt★
- MPC (Multi-mode Pumping Control)★

### Hopper

- Streamline hopper
- Aluminium alloy hopper cover
- Bar-type grille
- Hopper vibrator
- Cleaning ball stopper
- Chrome-plated concrete cylinder
- Wear-resistant S pipe
- Carbide wear plate
- Quick-release concrete piston
- Automatic forward/reverse agitator rotation
- Labour-saving device for hopper cover★

### Cleaning

- Water tank, 700L
- Water pump, 70L/min, 13bar

- Water pump, 20L/min, 200bar
- Hose reel for high pressure water pump, 10m
- Quick-connect water inlet

### Support

- SSM (Standard Support Mode)(Full Support/OSS/FS/LF/RF)
- iSM (intelligent Support Mode)★

### Placing Boom

- iMMC (intelligent Multi-arm Motion Control)
- OBF (One-joystick Boom Fold/Unfold)★
- OBP (One-joystick Boom Place)★
- ARC (Active Boom Rotation Control)★

### Delivery Line

- Self-locking end hose clamp
- Snap pipe coupling
- End hose, 3m, DN 125
- Double-layer pipes

### Lighting

- Boom tip light, LED

- Hopper light, LED
- Support area spotlight, LED
- Pumping warning light, LED

### Safety

- EPC (Emergency Pumping Control)
- Emergency hydraulic power interface for boom and outrigger
- End hose squeeze valve, operable by remote control
- Reversing camera system★
- 360° surround camera system★
- ARI (Around Risk Identification)★
- OGS (Outriggers Guidance System)★
- PAW (Placing Area Warning) + GSW (Ground Support Warning)★

### Digital Management

- ZOOMLINK APP

### Operation and Maintenance

- Mushroom button for horn
- Self-diagnosis and monitoring

ZOOMLION Heavy Industry Science & Technology Co.,Ltd.

Add: No.677, Lugu Road, Zoomlion Industry Park, Changsha, Hunan, China, 410205

Copyright © ZOOMLION 2024. All rights reserved. No part of the materials provided may be reproduced or copied in any form, or used for any purpose without prior permission from ZOOMLION.

en.zoomlion.com

